



PNJ INTERNATIONAL CO.,LTD



### TorkBuster

Torque impactor converts the drilling fluid kinetic energy to directly apply the torque on the drill through conversion  
Reducing the stick-slipping movement of the drill can better improve the mechanical drilling speed and protect the drill to prolong the life of the drill.  
Reduce fatigue of drill string components

Internal working principle: After entering the cavity, part of the drilling fluid is used to start the impact hammer, and the remaining drilling fluid is used to drive the reverse valve and impact hammer for movement. The kinetic energy of the drilling fluid is converted into energy to the impact hammer, to directly act on the drill by using the lower joint.

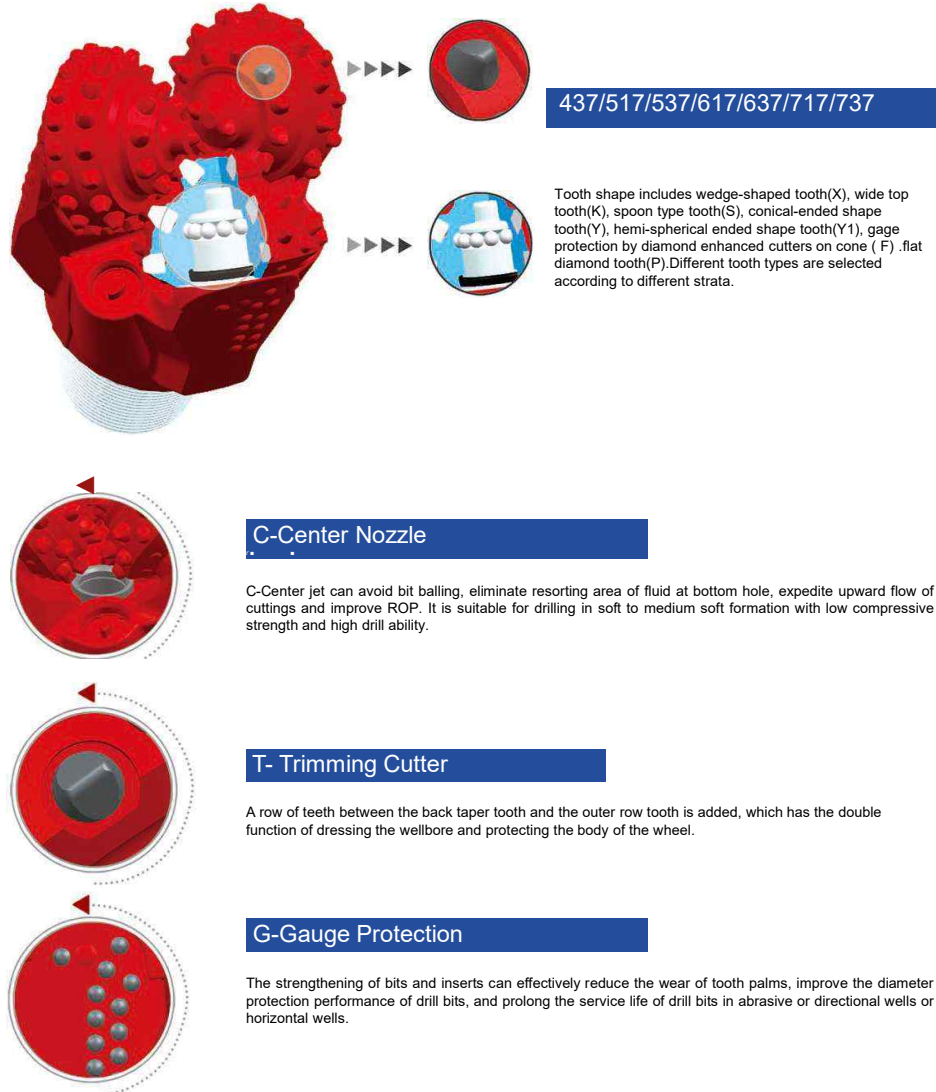


### Hybrid Bits

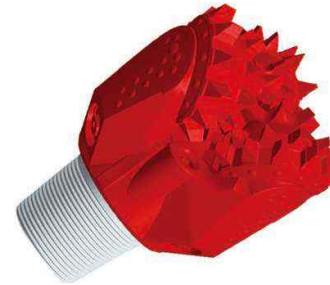
Higher ROP potential than roller cone drill bits, Compared to roller cone bits, hybrid drill bits can increase ROP, requiring less weight on bit and minimizing bit bounce.

Optimized drilling dynamics compared with PDC Compared with PDCs, hybrid bits are significantly more durable when drilling through interbedded formations. They reduce stick-slip and simplify drilling torque management while making it more consistent, enabling smoother transitions through varied formations. Improved stability and directional control enable better vertical control as well as higher build-up rates in curve sections.

## TCI bits



## Steel tooth bits

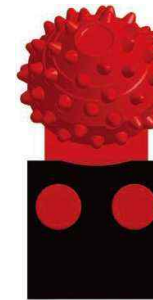


111Z114/115/116/117/127/211 /214/216/217

It is suitable for low compressive strength and high drillability in extremely soft strata, such as clay, mudstone, Cretaceous and so on.

It is suitable for medium strata with high compressive strength, such as medium soft shale, anhydrite, medium soft limestone, medium soft sandstone and medium stratum with hard intercalation.

## Cone Bit Cutter



GS 637

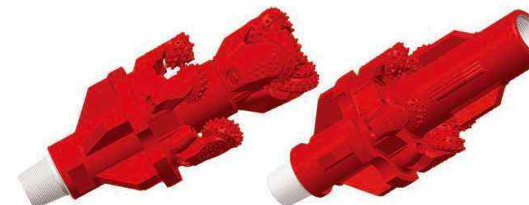
The roller cone is filled with teeth and the palms are installed with quick mounting. The base is formed by hot forging, the inner cavity is milled by machining center after heat treatment. The alloy teeth of the gear are designed with conical ball teeth to improve the wear resistance and impact resistance.



GT 537

It is suitable for medium hard formations with high compressive strength, such as hard shale, limestone, sandstone, dolomite, etc.

## Hole opener



The assembly bit, hole opener is made up of four or more wheels. The main cutting tooth is a new type of wear resistant alloy steel tooth or high quality carbide tooth. The collar bit is a three cone bit, which is suitable for large-diameter surface drilling, mine drilling and pipeline crossing and other engineering fields.



PNJ INTERNATIONAL CO.,LTD

## PDC Classification



Matrix Body PDC Bit



Steel Body PDC Bit



PDC Coring Bit



PDC-Reamer



Bi-Center PDC Bit



RC PDC Bit

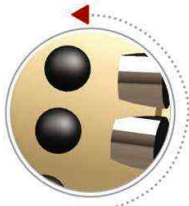


PDC Hole Opener



## Limiting Cutter

Effectively control the front PDC cutter to drill into the depth, improve the stability and reduce its drift.



## Shock-absorbing cutters

It makes the bit drilling more smoothly, to prevent the PDC cutter damaged in advance.



## Arc PDC cutters gauge

High quality arc PDC cutters gauge, reduce the abrasion of rock on the bit's body, increase wear resistance and stability of the drill gauge.



## PNJ INTERNATIONAL CO.,LTD

Address : 272, Wolpyeong-ro, Nam-gu,  
Ulsan-City, #44699, Korea  
Tel : +82-10-4628-6750  
Fax : +82-52-970-6750  
sales@pnjmach.com  
www.pnjmach.com

